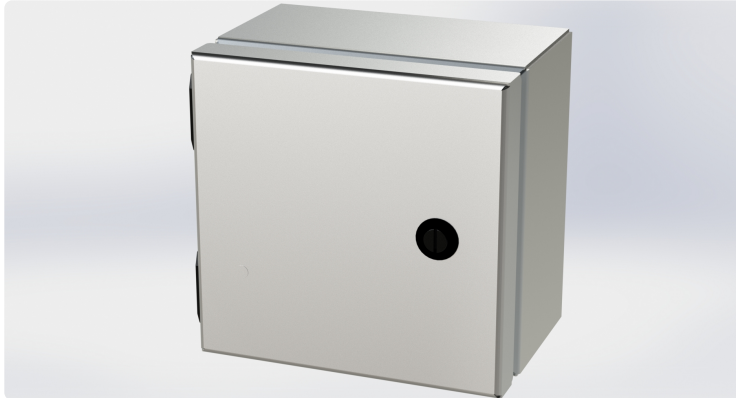




Your Enclosure Source®

Saginaw Control and Engineering  
95 Midland Road Saginaw, MI 48638-5770  
(800) 234-6871 - Fax: (989) 799-4524  
SCE@SaginawControl.com

## SCE-606ELJSS



## Product Specifications:

**Part Number:** SCE-606ELJSS  
**Description:** S.S. ELJ Enclosure  
**Height:** 6.00"  
**Width:** 6.00"  
**Depth:** 4.00"  
**Price Code:** S6  
**List Price:** \$169.40  
**Catalog Page:** 262  
**Est. Ship Weight:** 4.00 lbs

### Construction

- \* 0.063 In. stainless steel Type 304.
- \* Seams continuously welded and ground smooth.
- \* Flange trough collar around all sides of door opening.
- \* Pour in place oil & water resistant gasket
- \* 10-32 Standoffs provided for mounting optional panels.
- \* Removable hinges.
- \* Doors open 180 degrees.
- \* Black mini quarter turn latches.
- \* Latches are opened or closed with a screwdriver.
- \* Sealing washers and hole plugs included.
- \* Ground stud on door and body.
- \* Mounting feet included.
- \* Optional latches available.

### Application

Designed to house electrical controls, instruments and components in areas which may be regularly hosed down or are in very wet or oily conditions. Provides protection from dust, dirt, oil, and water. For outdoor applications a drip shield is recommended.

### Finish

#4 brushed finish on all exterior surfaces. Optional sub-panels are powder coated white.

### Industry Standards - (IS6)

- \* NEMA Type 3R, 4, 4X, 12 and Type 13
- \* UL Listed Type 3R, 4, 4X and 12
- \* CSA Type 4, 4X and 12
- \* IEC 60529
- \* IP 66

### Notes

Special Instructions apply for IS3, IS4 and IS6 to maintain the environmental rating of Type 3R for these parts. Instructions are located on the enclosure door. Drip shield is required on IS3, drip shield is recommended on IS4 and IS6. Drain holes are required on all.

### Accessories Included

SCE-ELJMFk Mtg Foot Kit (ELJ Enclosure)

### Optional Accessories

SCE-6P6 Subpanel, Flat  
SCE-6P6JGALV Subpanel, Flat Junction Galvannealed  
SCE-BVK Breather Vent

### Similar Part Numbers

SCE-10086ELJSS.S. ELJ Enclosure  
SCE-1008ELJSS.S. ELJ Enclosure  
SCE-12108ELJSS.S. ELJ Enclosure  
SCE-1210ELJSS.S. ELJ Enclosure  
SCE-1212ELJSS.S. ELJ Enclosure  
SCE-14128ELJSS.S. ELJ Enclosure  
SCE-1412ELJSS.S. ELJ Enclosure  
SCE-16148ELJSS.S. ELJ Enclosure  
SCE-1614ELJSS.S. ELJ Enclosure  
SCE-604ELJSS.S. ELJ Enclosure

### Installation Information

- \* Mounting Foot Kit for (ELJ) Enviroline
- \* Drip Shield Kit Assembly
- \* Dead Front CH & ELJ Style Installation Instructions
- \* Swing Panel Assembly for Enviroline Enclosures
- \* Dead Front Wall Mount < 20 In Height Installation Instructions
- \* Service Parts Wall Mount Junction & PB Enclosures