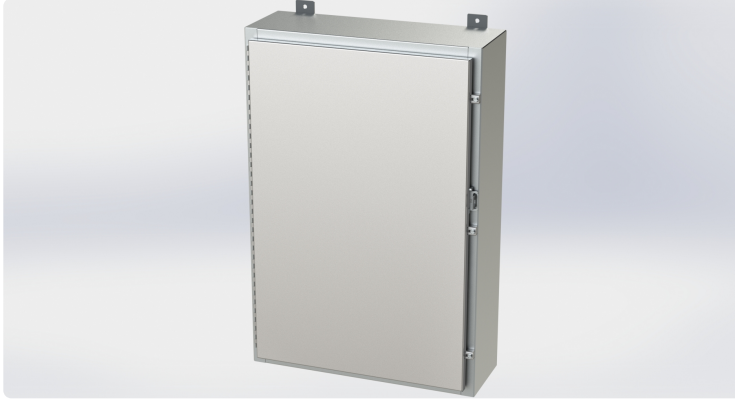




Saginaw Control and Engineering  
 95 Midland Road Saginaw, MI 48638-5770  
 (800) 234-6871 - Fax: (989) 799-4524  
 SCE@SaginawControl.com

## SCE-36H2408SSLP

SCE-36EL2408SSLP - Cost Effective Alternative.



## Product Specifications:

**Part Number:** SCE-36H2408SSLP  
**Description:** Nema 4X LP Enclosure  
**Height:** 36.00"  
**Width:** 24.00"  
**Depth:** 8.00"  
**Price Code:** S3  
**List Price:** \$1,385.87  
**Catalog Page:** 280  
**Est. Ship Weight:** 66.00 lbs

### Construction

- \* 0.075 In. stainless steel Type 304.
- \* Continuously welded seams ground smooth.
- \* Flange trough collar around all sides of door opening.
- \* Oil-resistant door gasket.
- \* Collar studs provided for mounting optional subpanels.
- \* Hasp and staple for padlocking.
- \* Stainless steel continuous hinge.
- \* Removable print pocket furnished if height and width of enclosure is greater than 12 inches.
- \* Ground stud on door.
- \* Stainless steel clamps on three sides door when greater than 30 inch wide.
- \* Welded mounting provision top and bottom of back.

### Industry Standards - (IS6)

- \* NEMA Type 3R, 4, 4X, 12 and Type 13
- \* UL Listed Type 3R, 4, 4X and 12
- \* CSA Type 4, 4X and 12
- \* IEC 60529
- \* IP 66

### Optional Accessories

- SCE-36P24 Subpanel, Bent
- SCE-36P24GALV Subpanel, Bent Galvanized
- SCE-BVK Breather Vent
- SCE-DS24SS Shield, S.S. Drip
- SCE-LPCLAMPSS Assembly, S.S. LP Clamp
- SCE-LPQR LP Style Quick Release Clamp Assy (Stainless)
- SCE-NADFKSS Kit, S.S. Swing-Out Panel Mounting

### Similar Part Numbers

- SCE-24H1608SSLP Nema 4X LP Enclosure
- SCE-24H2006SSLP Nema 4X LP Enclosure
- SCE-24H2008SSLP Nema 4X LP Enclosure
- SCE-24H2010SSLP Nema 4X LP Enclosure
- SCE-24H2406SSLP Nema 4X LP Enclosure
- SCE-24H2408SSLP Nema 4X LP Enclosure
- SCE-24H2412SSLP Nema 4X LP Enclosure
- SCE-24H3008SSLP Nema 4X LP Enclosure
- SCE-30H2008SSLP Nema 4X LP Enclosure
- SCE-30H2408SSLP Nema 4X LP Enclosure

### Installation Information

- \* Drip Shield Kit Assembly
- \* Swing Panel Assembly for LP Enclosures