

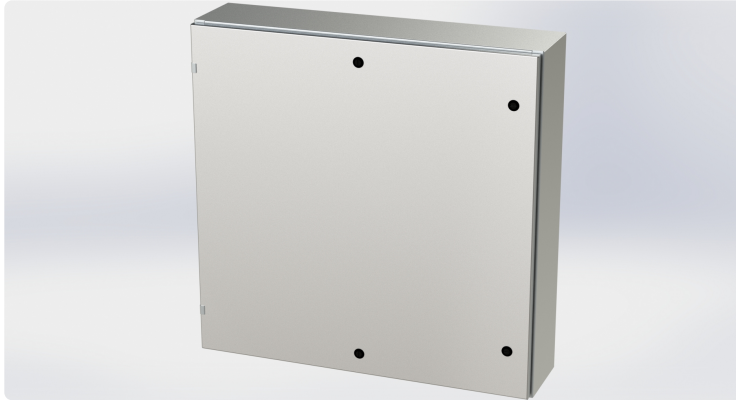


Your Enclosure Source®

Saginaw Control and Engineering
95 Midland Road Saginaw, MI 48638-5770
(800) 234-6871 - Fax: (989) 799-4524
SCE@SaginawControl.com

SCE-36EL3608SSLP

Product Specifications:



Part Number: SCE-36EL3608SSLP
Description: S.S. EL Enclosure
Height: 36.00"
Width: 36.00"
Depth: 8.00"
Price Code: S5
List Price: \$1,723.86
Catalog Page: 274
Est. Ship Weight: 102.00 lbs

Construction

- * 0.075 In. stainless steel Type 304.
- * Seams continuously welded and ground smooth.
- * Flange trough collar around all sides of door opening.
- * Pour in place oil & water resistant gasket
- * Collar studs 3/8-16 provided for mounting optional panels.
- * Stainless steel concealed hinges.
- * Removable and interchangeable doors.
- * Black quarter turn latches.
- * Latches are opened or closed with a screwdriver (optional tamper-resistant inserts are available).
- * Mounting holes in back of enclosure.
- * Mounting hardware, sealing washer and hole plug included.
- * Removable print pocket furnished if height and width of enclosure is greater than 12 inches.
- * Ground studs on door and body.

Application

Designed to house electrical and electronic controls, instruments and components in areas which may be regularly hosed down or are in very wet conditions. Provides protection from dust, dirt, oil, and water. For outdoor applications a drip shield is recommended.

Options

Optional mounting feet available. Door hardware available.

Finish

#4 brushed finish on all exterior surfaces. Optional sub-panels are powder coated white.

Industry Standards - (IS6)

- * NEMA Type 3R, 4, 4X, 12 and Type 13
- * UL Listed Type 3R, 4, 4X and 12
- * CSA Type 4, 4X and 12
- * IEC 60529
- * IP 66

Notes

Special Instructions apply for IS3, IS4 and IS6 to maintain the environmental rating of Type 3R for these parts. Instructions are located on the enclosure door. Drip shield is required on IS3, drip shield is recommended on IS4 and IS6. Drain holes are required on all.

Optional Accessories

- SCE-36P36 Subpanel, Bent
- SCE-BVK Breather Vent
- SCE-DF36EL36LP Panel, Dead Front (Wall Mount)
- SCE-DS36SS Shield, S.S. Drip
- SCE-ELFM36HSS S.S. EL Flush Mount Frame
- SCE-ELFM36WSS S.S. EL Flush Mount Frame
- SCE-ELMFK4 Foot Kit, EL Mounting (4pc.)
- SCE-ELSP3 KIT, Swing-Out Panel (20 High & Up)

Similar Part Numbers

- SCE-24EL2408SSLP.S. EL Enclosure
- SCE-24EL2410SSLP.S. EL Enclosure
- SCE-24EL2412SSLP.S. EL Enclosure
- SCE-24EL2416SSLP.S. EL Enclosure
- SCE-24EL3008SSLP.S. EL Enclosure
- SCE-24EL3010SSLP.S. EL Enclosure
- SCE-30EL2408SSLP.S. EL Enclosure
- SCE-30EL2410SSLP.S. EL Enclosure
- SCE-30EL2412SSLP.S. EL Enclosure
- SCE-30EL2416SSLP.S. EL Enclosure

Installation Information

- * Mounting Foot Kit for Enviroline Enclosures
- * EL Flush Mount Frame
- * Drip Shield Kit Assembly
- * Sealing Washer Specifications
- * Dead Front Wall Mount Installation Instructions
- * Swing Panel Assembly for Enviroline Enclosures
- * Dead Front Wall Mount < 20 In Height Installation Instructions
- * Swing Panel ELSP for Encl. Height > 16
- * Swing Panel ELSP for Encl. Height <= 16
- * Service Parts Wall Mount Enclosures